

TIFFIN

2025

CLASS-A

# ALLEGRO RED



## 2025 What's New Summary - Allegro RED

### WHAT'S NEW

---

- Dish Receiver Box Removed when Satellite is Not Installed
  - “Built by Tiffin Motorhomes in Red Bay, AL” Sticker Added
  - Exterior Ladder Standard
  - Starlink® Prep at Sewer Board (Optional)
  - Matte Finish Tile Floor Option Added
  - 38 KA Doors Removed for Open Bunk
  - New Generation 6 Paint Scheme
  - New Bordeaux Exterior Color
  - Redesigned Pull-out Island with Countertop Extension and Larger Drawers Below
- No Longer Available**
- Shadow Cabinets
  - Generation 4 Paint Scheme
  - Rustic Canyon and Fire Opal Exterior Colors

## Premium Paint

The eight-step, full-body paint system features premium grade paints sealed with three layers of clear coat with ultraviolet protection. An additional layer of high-performance film protects the front of the coach and select areas.

## GENERATION 5



G5 NASA



G5 EURO BLUE



G5 BORDEAUX **NEW**



G5 FROSTED GRANITE

## GENERATION 6 **NEW**



G6 NASA



G6 EURO BLUE



G6 BORDEAUX **NEW**



G6 FROSTED GRANITE

Images shown are representations of paint layouts only and do not reflect all exterior features or options. Colors shown may slightly differ from colors on actual product.

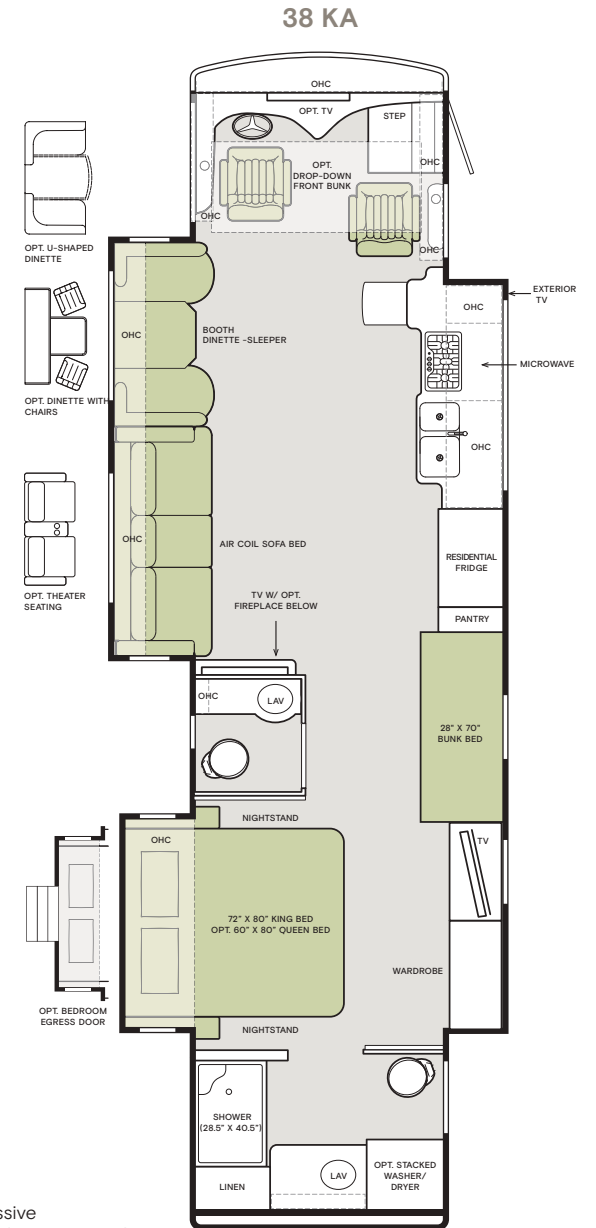
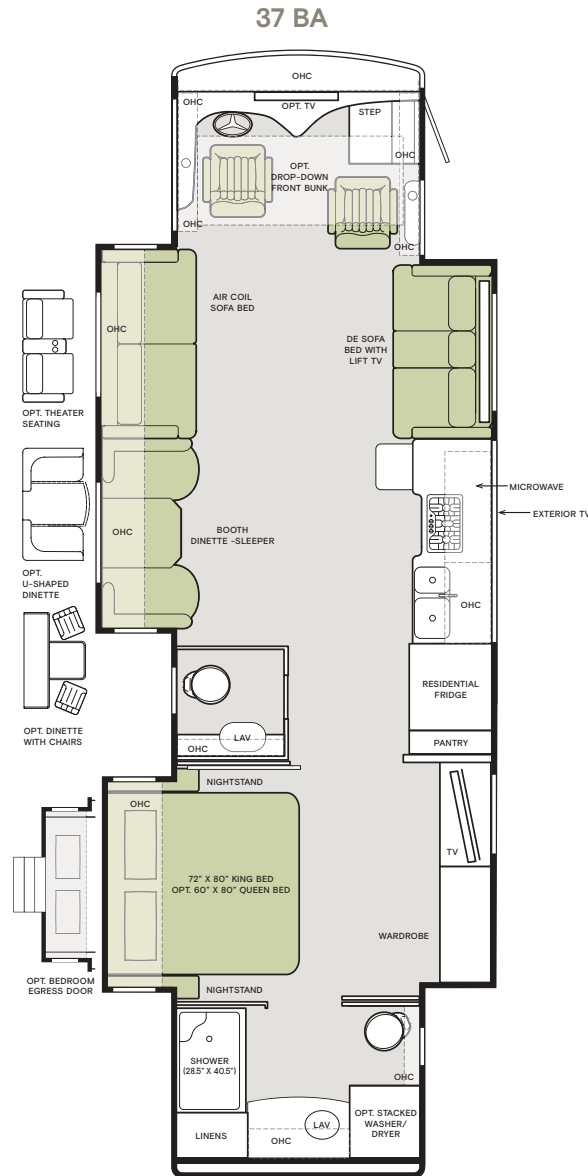
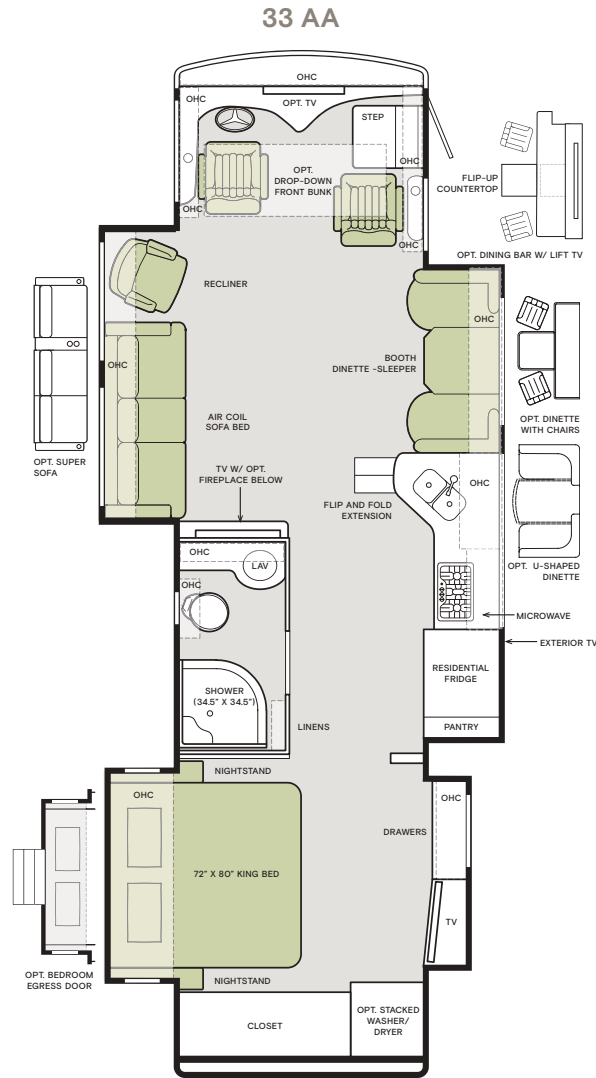
# Floor Plans

FLOOR PLAN	Overall Length (approx.) <sup>1</sup>	Wheel Base <sup>2</sup>	Overall Width <sup>1</sup>	Overall Height	Minimum Garage Height	Interior Height	Interior Width	Square Footage (approx.)	Basement Storage (cubic feet, approx.)	GAWR-Front (pounds)	GAWR-Rear (pounds)	GVWR (pounds)	Maximum Trailer Weight (pounds) <sup>4</sup>	Hitch Rating (pounds) <sup>2</sup>	GCWR (pounds)
33 AA	35' 2"	198"	101"	12' 10"	14'	84"	96"	335	84	14,320	24,000	38,320	10,000	10,000	48,320
37 BA	38' 6"	234"	101"	12' 10"	14'	84"	96"	375	119	14,320	24,000	38,320	10,000	10,000	48,320
38 KA	39' 6"	252"	101"	12' 10"	14'	84"	96"	390	119	14,320	24,000	38,320	10,000	10,000	48,320

<sup>1</sup> The approximated coach width and length does not include side-view mirrors and rear ladders.

<sup>3</sup> Maximum Trailer Weight is dependent on the loading and towing variables which include the GVWR, GAWR and GCWR, as well as adequate trailer brakes.

<sup>2</sup> Square footage was calculated with the slide-outs fully extended. Calculations only include living areas and do not incorporate the driver's compartment.



If optional furniture combinations are selected, window locations may vary from diagram shown. All options may not be available in every model. Because of progressive improvements and specifications, standard and optional equipment are subject to change without notice or obligation. For a complete and up-to-date list of available options and specifications, visit [tiffinmotorhomes.com](http://tiffinmotorhomes.com).

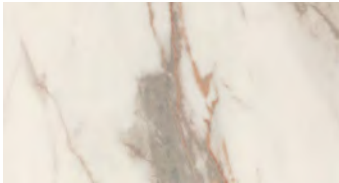
## Interior Décor

Make your experience on the road all your own. Express yourself by choosing from interior selections such as cabinet finishes and décor options for every part of your motorhome. In the 2024 Red, you'll be able to travel in style no matter where you go.



**MR. BOB TIFFIN  
RECOMMENDS**  
**SOLSTICE  
DÉCOR PACKAGE  
WITH SANDSTONE  
CABINETS.**

## FLOORING

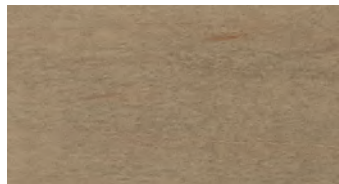


**MARBLE OBSESS**  
Option for Polished or Matte Porcelain Tile

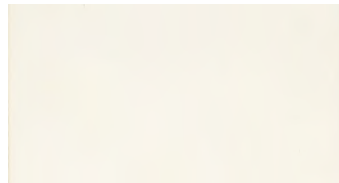
## CABINETS



**PLATINUM**



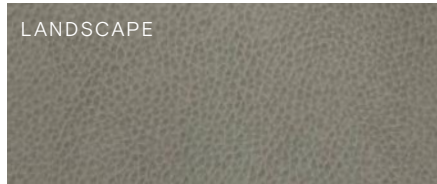
**SANDSTONE**



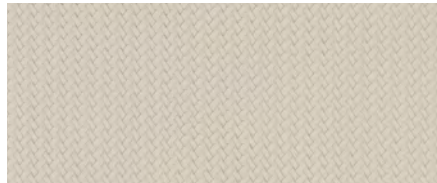
**WHITE LINEN**

Images shown are representations of paint layouts only and do not reflect all exterior features or options. Colors shown may slightly differ from colors on actual product. Colors of interior décor options shown may vary from colors on actual product.

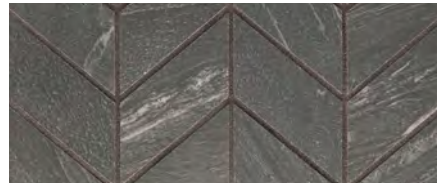
## STONEY CREEK



**FURNITURE**



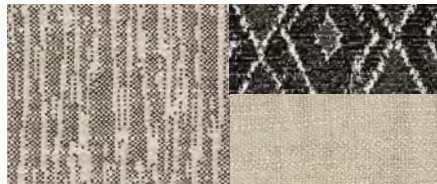
**WINDOW TREATMENT**



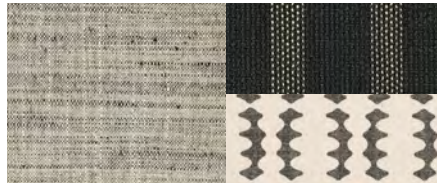
**BACKSPLASH**



**COUNTERTOP**

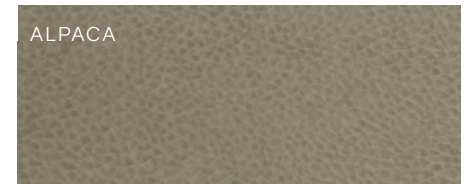


**LIVING ROOM**

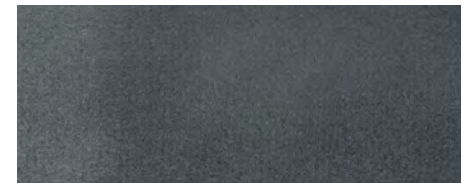


**MASTER SUITE**

## SOLSTICE



**FURNITURE**



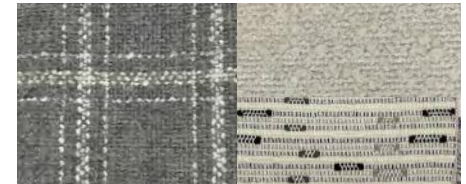
**WINDOW TREATMENT**



**BACKSPLASH**



**COUNTERTOP**



**LIVING ROOM**



**MASTER SUITE**

1

YEAR OR 12,000 MILES  
LIMITED WARRANTY

3

YEAR DELAMINATION  
LIMITED WARRANTY WITH  
NO MILEAGE LIMITATION

5

YEAR CONSTRUCTION  
LIMITED WARRANTY WITH  
NO MILEAGE LIMITATION

1

YEAR COACH  
ROADSIDE SERVICE

∞

ONGOING  
CUSTOMER SUPPORT

FOR SALES CALL 256-356-8661 AND PARTS & SERVICE CALL 256-356-0261 OR VISIT [TIFFINMOTORHOMES.COM](http://TIFFINMOTORHOMES.COM)  
105 2ND ST NW RED BAY, AL 35582  



All trademarks and logos are owned or used under license by Tiffin Motor Homes, Inc. and include, but are not limited to: TIFFIN®, MANY ADVENTURES. ONE DREAM™, ALLEGRO®, ALLEGRO BREEZE®, ALLEGRO RED®, PHAETON®, ALLEGRO BUS®, ZEPHYR®, WAYFARER®, ROUGHING IT SMOOTHLY®, OPEN ROAD®, BYWAY™, and associated logos and emblems. Unauthorized use of any trademark of Tiffin Motor Homes, Inc. is strictly prohibited.  
© Copyright 2024 Tiffin Motor Homes, Inc.

For all information concerning the limited warranty provided by Tiffin, please refer to the full written limited warranty set forth on the Tiffin website or held by our authorized dealerships.  
Please note, some interior furnishings not included. Revised: 6/11/2024